

CARDINHAM & MILLPOOL COMMUNITY MAGAZINE

DECEMBER '25/JANUARY '26



Rainbow over St Meubred's Church, Cardinham (by Fiona Hammond)

ISSUE 118

Single Issue Price £1.25

CONTACTS

Editorial Team

Lizzy Smart: 01208 821101

lizzysmart@gmail.com

Peter Claridge

monnsoon90@yahoo.co.uk

Treasurer & Advertising

Simon Smart: 01208 821101

simonseansmart@gmail.com

Distribution

Julia Maynard: 01208 821216

juliamaynard1949@gmail.com

Design, Print & Production

St Austell Printing Co.

01726 624900 (ext. 109)

Email: polly.airey@sapc.co.uk

CONTRIBUTIONS

NEW DETAILS!

Please send your contributions to

polly.airey@sapc.co.uk

- a Microsoft Word file is best.

Photos should be sent in
uncompressed **jpeg** format.

We accept files and advertisements
as high res **PDFs** (preferred).

If typed or handwritten, please send
it to one of the Editors.

We select articles based on local
interest and reserve the right to
edit for clarity and length.



Copy Date for FEBRUARY / MARCH Issue
Typed/Handwritten: MONDAY 12TH JANUARY 2026
Deadline by Email: FRIDAY 16TH JANUARY 2026

Advertising Rates & Sizes

Advertising is free for all local community and charity events.

All commercial advertising and events will be charged: 1/4 - £24pa. 1/3 page - £36pa. 1/2 page - £60pa. Whole page - £120pa. There is a minimum charge of £20 for advertising.

One-off page advertorials - £25

Photographs & Scanning

Please email an original JPG with no compression or reduction, PDF or TIFF to

polly.airey@sapc.co.uk

Special photographs, drawings, illustrations, etc can be scanned.

Please contact polly.airey@sapc.co.uk

For required format & any queries please contact **polly.airey@sapc.co.uk**

Need an extra copy?

Subscriptions £5pa (postage £11pa)

Single Issue £1.25 Contact Julia on 821216

The opinions expressed in articles in this magazine are those of the authors, and are not attributable to any member of the magazine production team.

FROM THE EDITOR

With best wishes to you all

Lizzy, Polly, Simon, Peter and Julia



Luxury, peaceful, lakeside Shepherd Hut accommodation available to book now!

Featuring Smart TV, USB ports & Wi-fi, power shower, copper basin, espresso machine, leather sofa, wood burner, king size bed, barbecue, outdoor furniture, fire-pit, private lake use with boat & complete solitude.

Couples only, pet free

Contact **THE GOOSE NEST**

01208 821788 / 07809 396975

the_goose_nest@outlook.com

ST. MEUBRED'S CHURCH UPDATE

Services for St Meubred's, Cardinham - December/January

| | | |
|---------------|---------|---|
| December 7th | 9.30 am | Holy Communion |
| December 14th | 11am | Joint Service with Millpool Methodist Church in Cardinham Parish Hall with Paul Holley and the Parish Nurse |
| December 20th | 6 pm | Village Carol Service followed by seasonal refreshments |
| December 25th | 10 am | Family Eucharist |
| December 28th | 10 am | Holy Communion at St Stephens, Nanstallon |
| January 4th | 9.30 am | Holy Communion |
| January 11th | 11 am | Joint Service with Millpool Methodist Church in Millpool Chapel |
| January 18th | 9.30 am | Holy Communion |
| January 25th | 9.30 am | Morning Prayer |

Books for sale or swap in St Meubred's Church: If you have books or DVDs you are happy to donate to our library for others to read or watch, please leave them on the bookshelf as you enter the church. Do help yourselves to either.

Quiz evening Friday 5th December, in Cardinham Parish Hall:

Teams of 4 or 6 at £7 per head, including a buffet supper

Village Carol Service, Saturday 20th December 6pm: followed by seasonal refreshments. Everyone warmly welcome.

Talk by Merlin Hanbury-Tenison, Temperate Rain Forests, at 2.30 pm

St Meubred's Church: followed by light refreshments.

Tea Party & Chat

December 4th and January 1st in Cardinham Parish Hall. Join us for a cuppa, cake and chat, everyone warmly welcome.





BODMIN TEAM MINISTRY

www.bodminteam.church



Dear Friends,

I wonder how many names or titles you have?

Apart from your forename(s) and surname: mum, dad, auntie, grandad, boss, colleague, neighbour and so on. As we approach Advent and Christmas I am reminded that Jesus had many names and titles. We have an Advent candle which has 25 such names so we ponder one each day in Advent as the candle burns down.

One of my favourite titles of Jesus is **"Prince of Peace"**. We come across it in the prophecy of Isaiah and for many it is familiar from Handel's Messiah: **"Wonderful, counsellor, almighty God, the everlasting Father the prince of Peace"**. In a world beset with warfare how desperately we need the prince of peace.

Jesus demonstrated the nature of this title throughout His ministry, both in the way He lived and the way He died. He built bridges across divided communities, deliberately befriended the outcasts of His day and extended healing to those beyond the fringe. The ultimate peace-making is seen in His death on the cross. Here we find inner peace, the forgiveness for all wrong-doing.

As we prepare to celebrate Christmas may we seek to tread in the footsteps of the Prince of Peace. May we reach out to those our society rejects offering hospitality and healing. May we be peace-makers in our families and local community.

Seasonal blessings!

John Hereward





Cardinham School

Grow your mind; aim high

secretary@cardinham.cornwall.sch.uk

01208 821326



Hedgehog Class

Hedgehog class have been discovering how to record stories in pictures and words. They have been inspired to create beautiful retellings of the books *Brown Bear*, *Dear Zoo* and *Peace at Last*. Their work has been a real success.



Squirrel Class

Squirrel Class had an amazing time during our Design and Technology day! We became mini engineers, learning all about axles and axle holders to make our very own cars. The children measured and carefully cut wood to create their axles, then put everything together ready for testing. There was lots of excitement as we watched our cars roll and thought about how we could make them even better next time. It was wonderful to see so much curiosity, creativity, and perseverance in action!



Deer Class

Deer Class have had a fantastic start to the term! During our DT days, we explored structures and bridges in depth, learning how design and strength work together. One child summed it up perfectly: *"It was fun and we got to work together in teams on our determination and patience – it helped with our collaboration."* We've also begun a new writing unit focused on writing instructions and continued our maths learning with division. Everyone has settled back in well after the half-term break and really enjoyed meeting Cardinham's new headteacher, Mr Larcombe.



SUBSCRIPTION PAYMENTS

Subs. to the magazine are **£5pa**, plus any donation you would like to make. **Subs run from January - January.**

Please pay your distributor as usual, or if you prefer, by Bank Transfer.

The magazine bank account details to use are:

Sort Code: 30-97-28 Account No.: 02314833

Account Name: Cardinham and Millpool Community Magazine

Please add your name/address as reference

Don't forget postage, if applicable, £11pa

Thank you for paying promptly

Treveddoe Farm

Warleggan



Belted Galloway beef

Farmed in a regenerative system that encourages nature to flourish whilst producing delicious beef

100% pasture fed

Farmed to organic principles

Local delivery or collection from the farm

To order please contact Ben & Claudi on the details below

☎ 07825 568700

✉ treveddoefarm@outlook.com



Dial -a- Ride



- Travelling from Cardinham & Millpool to Bodmin on Mondays & Thursdays.
- £5 return.
- Pick up from 8.15am, return lunchtime.
- Eligibility: mobility difficulties/over 55.
- Wheelchair access.
- To Wadebridge on first Thursday of the month - £6 return.

- Shopping trips.
- Visiting friends.
- GP appointments etc.

For more information
and to book call:

01872 266886



CARDINHAM HELPLINE



We are looking forward to meeting with you at our **Christmas Lunch** on 18th December. Please note that this will be at the slightly later time of 1pm to allow our team more time to prepare the Hall and cook the festive meal. We look forward to seeing our regular diners but if you are unable to attend or are not a regular attendee please contact **Julia on 01208 821216** to let her know. You can be sure of a warm welcome and a delicious meal as is the case throughout the year.

I would like to take this opportunity to thank our Co-ordinator, Jenny Saunter for organising all the lifts to appointments and to all the drivers who so kindly take time to provide this service. It is very much appreciated by all those who use it.

Many thanks also to our splendid cooks, washers up, table setters, floral arrangers and those who do the laundry. We can't do without you all.

Have a very Happy Christmas and New Year and we look forward to welcoming you again on January 15th for the first Helpline lunch of 2026.

A reminder that our **AGM** takes place on Tuesday, 20th January 2026 at 4.30pm in the Parish Hall.

Kind regards, Rosemary



- MOBILE LOCKSMITH
- DOMESTIC, COMMERCIAL & AUTO
- INSURANCE RATED LOCKS
- ON SITE KEY CUTTING
- UPVC MECHANISMS, PATIO, GARAGE, DIGITAL, KEYSAFES
- REMOTE & CHIPPED KEYS SUPPLIED
- FREE ESTIMATES
- PROPERTY SECURITY & MANAGEMENT

www.duchylocks.co.uk

Tel: 0800 97 888 37

Mob: 07966 654267



Cardinham Parish Hall Available for Hire

Cardinham Parish Hall

Church Road
Cardinham
Bodmin
Cornwall
PL30 4BN



Any Enquires Please Contact

Debra Best - 01208 821554/ 07798838443

cardinhamhall@btinternet.com

WARLEGGAN HISTORY GROUP

TUESDAY 9TH DECEMBER 7.30PM

'A CHRISTMAS CAROL'

A SOLO PERFORMANCE BY DAVID MYNNE

ST BARTHOLOMEW'S CHURCH, WARLEGGAN

Come and experience David's interpretation of
Charles Dickens' atmospheric tale of Ebenezer Scrooge
£12 to reserve a seat 01208 821494

PLEASE CHECK YOUR TREES

Now that we're in the windy winter season please can all landowners check any of their trees bordering roads and public paths to make sure they're safe and not likely to shed branches or fall down in the storms that we will undoubtedly suffer in the coming months. This is a dangerous time of the year so we all need to be alert and try to minimize disruption, damage and injury. If you spot an issue with a tree please contact the landowner if known or report it online through the Cornwall Council website using the following link:

<https://www.cornwall.gov.uk/transport-parking-and-streets/roads-highways-and-pavements/report-a-problem-with-a-road-or-pavement/report-an-issue-with-a-tree/>

A parish nurse for Cardinham?

Have you ever found it difficult to navigate your way through health services, either for yourself or for someone who needs help? St Meubred's is part of the Bodmin church team, who through our social enterprise, Bodmin Way, currently employs a parish nurse working in deprived Bodmin neighbourhoods. We know what an amazing difference she has made, so are keen to bring something similar to Cardinham, working with other rural parishes. We are very grateful to the Cally Barrett Wind Turbine Community Fund for helping to fund this, along with money we received from a legacy. A nurse has now been appointed, watch this space!

So what will this nurse do? They will hold regular sessions using our community tea, the Helpline lunch and Millpool Methodist church, with home visits as required. Managed by Bodmin Way, they will have direct access to staff and records at Bosvena Health. An existing data sharing agreement covers this collaborative arrangement. Appointments can be made, tests reviewed and treatment pathways supported, also regular blood pressure checks and health promotion. They will be a registered nurse, monitored by a national agency, Parish Nursing Ministries UK, that has an agreement with the Nursing and Midwifery Council for ongoing accreditation. As a church initiative, for those who would like this, they can give Christian pastoral care but this service is open to all. The current funding will see us to the end of the financial year.

by Audrey Runnalls

The Cardynham Gymkhana in the early 1940s

I always loved to ride but no-one ever actually taught me: as a farmer's very young daughter, I remember simply sitting at the front of my father's saddle, my little hands sharing his reins as he frequently rode to the outlying fields of the farm. For me, learning to ride was as natural as learning to walk.

Before the mid 1940s and the arrival of powered vehicles and machinery, horses were a common mode of transport in Cornwall and were vital to many farming tasks such as pulling ploughs or hauling home carefully loaded hay wagons. A large farm would need several horses; they were greatly valued and we children learned the importance of looking after them well.

The first horse that was truly mine was Tubby, a small, newborn pony that sadly had been left orphaned on the Moor. Once in the stable and my responsibility, I settled him, coaxed him to feed and gradually gained his trust. Fully grown, Tubby easily accepted a halter and reins and in no time at all I was riding him bareback around the farm, down the lanes and up onto the Moor, galloping through heathland and leaping over streams.

It was on Tubby that I went to the very popular Cardynham Gymkhana, held several times a year at Little Downs. These gymkhanas, that continued through the War years, all proceeds in aid of the Spitfire Fund, were attended by many classes of riders. Following the more serious, competitive events were many light-hearted contests aimed at less experienced, young riders; these included pole bending and races such as egg and spoon, sack, and potato-collecting, all of which were challenging but fun for the young riders and were entertaining for the crowds to watch.

Frequently the gymkhana would finish with the highly competitive, very raucous Musical Poles (something that that would never be permitted today!) This event, loosely based on the party game Musical Chairs, was open to everyone, men, women, children of any age and on any size of pony or horse... and a huge number of people participated. Several poles were knocked equidistant into the ground in the centre of the arena. Whenever the music was playing, the riders had to ride (usually they galloped!) their horses in a clockwise direction around the marked-out edge of the arena but the moment that the music stopped, everyone was free to race towards the centre, and race they did, all together in a furious battle to claim a pole to stay in the game! One by one the number of poles was reduced until just a single pole and two, eager-to-win riders remained...

I recall an occasion when a young girl on a small moorland pony beat all of the opposition and seized the prize. This clever, fearless little pony needed no encouragement: he simply listened to the music and when it stopped, he knew to turn swiftly and race to the pole!



Ollie Farley representing Canyke First Cub Scouts at the village Remembrance Service



News from MILLPOOL METHODIST CHURCH

Our **Harvest Festival** lunch and service was well attended. Thank you to all who donated items for the Food Bank which were gratefully received.

Now our thoughts are turning to Christmas. Look out for the village Christmas tree which will be up in time for the **tree lighting on Monday 8th December**. Anyone is welcome to add a bauble or message in memory of a loved one.

The **Chorale** have five bookings leading up to Christmas, the first being at **Bodmin Late Night Shopping on Friday 28th November**, when we sing in our usual spot in the Arcade at 5.30 pm.

Donations in lieu of Christmas cards and the offerings at the Christmas Eve Service will be for **Action For Children**. We would be delighted to welcome you to any of the events listed below and would also like to wish you **a very Happy Christmas and a Healthy New Year**.

DIARY DATES

Monday 8th December 7.00pm

Carol Singing at Millpool's Village Christmas Tree with the Millpool Chorale followed by warming soup and hot drinks in the Community Room.

Friday 12th December 7.30pm

Millpool's Christmas Cracker with The Lost Chords Ukulele Group
Free entry. Donations and raffle to be shared with Shelterbox.

Sunday 14th December 11.00am

United Service at Cardinham Parish Hall

Wednesday 24th December 6.15pm

Candlelight Carol Service led by Revd Nichola Jones
Offertory for Action For Children

Tuesday 30th December 6.00pm

Millpool's Beetle Drive and Christmas Party
This is a free night for all but a sharing plate would be very welcome

Sunday 11th January 11.00am

United Service at Millpool Methodist Church

Friday 16th January 7.30pm

Edith and Rick's Quiz
Teams of up to 6 persons. £6 per adult (children free) to include a pasty supper

CORNISH CHRISTMAS WORDS

Merry Christmas!
They are delicious mince pies
It's a little chilly
Let's go carol singing
December
Wreath
Is there any cheese?
Holly
Ivy
Mistletoe
Bells
Christmas tree
Angel
Deer
Christmas Pudding
Christmas Cake
Gingerbread
Gingerbread house
Turkey
Star
Shepherds
Three kings
Gold, frankincense and myrrh
Manger
Stable
Presents
Father Christmas
Baubles
Decorations
Peace
Snow
Snowman
Yule Log
Christmas Cards
Carol Singers

Nadelik Lowen!
Pastigow brewgik dentethyel yw
Tamm yeyn yw
Gwren ni mos kana karolyow
Mis Kevardhu
Garlont
Eus keus?
Kelyn
Idhyow
Ughelvarr
Kleggh
Gwedhen Nadelik
El
Karow
Podyn Nadelik
Tesen Nadelik
Torth jynjyber
Chi torth jynjyber
Yar Gyni
Sferen
Bugeledh
Tri myghtern
Owr, frankynkys ha myrr
Presep
Marghti
Rohow
Tas Nadelik
Tegennow
Afinansow
Kres
Ergh
Den ergh
Yttew Nadelik
Kartennow Nadelik
Kanoryon Karolyow



Cardinham & District Gardening Club

November 2025

Gosh what a change in the weather, were we looking for rain at some point not long ago.. as they say beware of what you wish for! Undeterred by minor factors such as weather, the Gardening Club has continued to flourish! Our last visit of the year saw about a dozen of us make our way to **RHS Rosemoor**. It was well worth the journey: a glorious garden on a lovely if breezy day. Trees in North Devon on the turn and so much colour from the herbaceous plants, trees and shrubs all enhanced by clever planting and design. We were disappointed not to take a coach load, but those of that went had wonderful day out.



Rupert Kirkwood attracted an audience of over 50 on December 10th. He had the whole meeting absolutely rapt by his talk, which included lots of video clips of the 'golden nuggets' of wildlife he films as he paddles his kayak around the coast of Devon and Cornwall. So many close encounters with huge marine creatures including dolphins, whales and giant tuna captured on film. His delivery was so clear with lots of humour, as well as a fascinating insight into the marine world around our coast. His photography included sea birds, razor bills, kittiwakes, guillemot and the iconic puffins, as well as otters. There was so much he included and delivered with such clarity and self-deprecating manner. Many of us agreed it was one of the best talks we have had.

We end 2025 with a **Christmas Quiz** on December 8th. hosted by Becky Martin. Her quizzes are always fun and working in teams not too taxing. It will be followed by seasonal refurbishment.

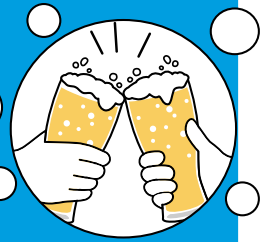
The New Year sees us welcome back an old friend of the club, **George Kestell**, on 12th January to our AGM. George is a great speaker and excellent gardener so join us to get the gardening year off to a great start, you will be made very welcome. Subs will be due and the new programme ready for 2026.

Enjoy your garden, Libby <https://cardinhamgardenclub.wordpress.com/>

Photo of the pumpkin display at RHS Rosemoor

UPCOMING EVENTS

HELD AT CARDINHAM PARISH HALL



POP UP PUB

On the First Saturday of the month - 2026

7th Feb - 7th March - 4th April

2nd May - 4th July - 1st August

5th Sept - 3rd Oct - 5th Dec

(NO PUB in JANUARY, JUNE, NOVEMBER)

To hire the hall or for
any enquiries, please
contact Debra Best
07798 838443

MURDER MYSTERY NIGHT

Saturday 18th April 2026

A "who done it" themed evening, featuring Murder by Appointment
theatrical group, more details to following on posters and Facebook

Community Event: 13th June 2026

Following the successful event last year we will be hosting another but this
time in June - more details to follow soon...

QUIZ AND PASTY NIGHT

20th November 2026 - watch this space!

USEFUL PHONE NUMBERS

(preceded by 01208 unless otherwise stated)

| | | |
|-----------------------------------|--|--------------------------------------|
| Police NON emergency | | National 101 |
| Blisland Inn, Blisland | | 850739 |
| Cardinham Bellringers (Captain) | Nic Best | 07747 724678 |
| Cardinham Hall Bookings | Julie Best | 821227 |
| Cardinham School (Head) | David Jones head@cardinham.tpacademytrust.org | 821326 |
| Cornwall Councillor | Jenny Cruse cllr.jennifer.cruse@cornwall.gov.uk | 07710 219465 |
| Film Club | Debra Best 821554 Sonia Tucker 821382 | Julie Best 821227 Nic Best 821459 |
| Flowers for St. Meubred's | Libby Pidcock | 821303 |
| Friends of St. Meubred's | Loveday Sutton | 821350 |
| Gardening Club | Loveday Sutton | 821350 |
| Helpline | Gill Long / Jenny Saunter | 821745 /07854 545467 |
| London Inn, St Neot | | 01579 326728 |
| Methodist Circuit Office | office@bpwcircuit.org.uk | 895157 |
| Millpool Chapel | Shirley Doran | 813685 |
| Millpool Coffee Morning | Julia Maynard | 821216 |
| Millpool Institute/Snooker Club | John McDonald | 821448 |
| Mother & Toddler Group | Crissie Butler | 07540 181416 |
| Parish Council Chair | Julie Best cardinhamclerk@gmail.com | 821227 |
| Parish Council Clerk | Jo Wilson | 01841 520796 |
| Bodmin Team Ministry, Team Rector | Paul Holley | 07470 192378 |
| Sports Club | Les Spong | 821591 |
| St. Meubred's Focal Minister | Revd John Hereward | 79078 |
| St. Meubred's PCC Secretary | Rosemary Rowe | 821225 |
| St. Meubred's Reader | Ann Kerridge | 76714 |
| St Neot Brownies | Karen Cunningham | 01579 321581 |
| St Neot Scout Group | John Body | 01579 320334 |
| Warleggan Young Farmers | Laura Colwill lauragco@hotmail.co.uk | 07913 330078 |

Please send corrections or additional numbers you would like to see to lizzysmart@gmail.com Tel 821101

Cornish Christmas Celebrations were known to involve Gin and Cake

Cornish Christmas Celebration involved many traditional customs.

The old Cornish custom of taking gin and cake at Christmas time began when shop owners would give lower classes gin and cake to thank them for purchasing their Christmas goods there. Often the gin served would be 'mahogany'; a traditional Cornish drink made from two parts gin and one part black treacle.

To mix this unique drink, you warm the gin and the treacle and mix them together slowly, creating a drink which tastes a bit like alcoholic treacle toffee.

Unfortunately this gin and cake tradition seems to have abated in recent years in Cornwall!

Mistletoe Tradition - The Cornish "Kissing" Bush

Like many traditions, the Cornish Christmas tradition of the Cornish Bush has its roots (pardon the pun) in winter solstice Pagan celebrations. The consensus among experts is that the use of Mistletoe in ritual form started with the Celtic Druids. This ancient civilization of people lived on the British Isles in what is now Ireland and Scotland.

Adapting the pagan meanings and symbolisms to fit Christian belief systems, the Cornish kissing bush now represents new life. This three-dimensional wreath is made by weaving holly, mistletoe and ivy around a circle of withy – in the centre of which is hung a "crown" of rosy apples and a generous sprig of mistletoe. The beautiful festive ringlet is then topped with a candle and hung indoors on December 20th.

Cornish tradition states that dancing in rings underneath the Cornish Bush whilst the candle is lit welcomes in the God of Light. The old "kissing bunch" (as it was sometimes known due to the dancing and merriment which took place underneath it) is still hung from the central beam of the living-room in cottages and homes across Cornwall.

The well-known tradition of kissing under the mistletoe evolved from the tradition of the Cornish Bush and is now practiced all over the country with people hanging sprigs of mistletoe in doorways and arches in the hope of attracting a Christmas kiss!



Thank you to those who attended the **Remembrance Service** at the War Memorial in Cardinham last Sunday 9th November.

Here is a picture of the memorial after the wreaths were laid .

In spite of the inclement weather there was a good turnout and after the brief service and silence led by Ann Kerridge we all repaired to the village hall for refreshments and good conversations.

Janet Hereward



Festo, his wife Revd Grace & Jemma Morgan gave a very interesting talk at St Meubred's Harvest Festival about the work of their charity in the Dodoma Region of Tanzania called **'Empowering the Future'**

Through this charity they are helping subsistence farmers & young people to farm in better ways & to understand Climate Change. Jemma Morgan who has a degree in Agro-Forestry & Global Food Security has joined them out there & is being a great help.

To learn more on how you too can help go to: **www.empoweringthefuture.net**

Cardinham Hall Quiz Night on 10th October.

Thanks go to their caller Sonia Tucker & the Hall Committee for organising such a fun event for our community



*Sonia The Caller
hiding from the local Paparazzi!*

*A festive Highland cow at Treslea Downs
[Ed. Possibly decorated by Polly for this edition...]*



Thanks Lizzy
for the photos!

Why does Cornwall need a New Local Plan?

Cornwall needs a new Local Plan because the current one is no longer sufficient to meet new, higher housing targets set by the government, and its policies are aging. The existing plan is also being updated to incorporate recent changes, such as the declaration of a climate emergency and a shift in transport philosophy to prioritize community needs over car-centric growth.

Housing targets have increased

The government's standard method for calculating housing needs has changed, requiring Cornwall to plan for 4,421 new homes per year instead of the 2,707 in the existing plan. The current plan cannot meet this new requirement, meaning some of its policies are now considered "out of date".

Age of the plan

Since the current plan is more than five years old, the council must be able to demonstrate that it remains "up to date" and can meet the housing numbers and current 'Concept of Sustainable Development'

Therefore all planning applications currently refer back to the National Planning Policy Framework and requires us to find in favour of the 'Presumption of Sustainable Development.'

<https://www.gov.uk/government/publications/national-planning-policy-framework—2>

"Development that meets the needs of the present without compromising the ability of future generations to meet their own needs."

Such needs would be Social Economic and Environmental. However, soundings are that Environmental needs are set to be outweighed by the Social/Economic needs.

Time line to produce plan

Formal construction of plan to commence February 2026 and is planned to complete circa 2028. Followed by Examination and Adoption process that will lead to adoption circa January 2029.

An initial public survey can be accessed on the 'Lets Talk' Council page where you will find links to various important documents.

<https://letstalk.cornwall.gov.uk/planning-for-our-future>

Interim policy statement from Cornwall Planning

<https://www.cornwall.gov.uk/media/4vgdpzic/interim-policy-statement-final-april-2025.pdf>

Baseline report

<https://democracy.cornwall.gov.uk/documents/s191421/Local%20Plan%20Update%20-%20Appendix%201%20-%20Draft%20Baseline%20Report.pdf>

Draft plan

<https://democracy.cornwall.gov.uk/documents/s191423/Local%20Plan%20update%20-%20Appendix%203%20-%20Draft%20Engagement%20Plan.pdf>

Public Consultations (Walk in events) are currently taking place all over Cornwall where the public are invited to attend and have their say. A list of these are available on the Cornwall Council website.

Lost Neighbourhood Plans There must exist a certain amount of embarrassment by Officers regarding the fact that only eleven out of 77 Neighbourhood Plans in Cornwall are deemed to be 'in date' based on the rationale that those plans make specific site allocations which are deemed to be of sufficient size and protected by 14B in the National Planning Policy Framework. These plans involved the public and specifically the Parish Councils in a huge amount of work which involved public engagement and hours of very hard high level detailed presentation. All of which was undertaken by volunteers. There was also funding available to enable the Parish Councils to do a thorough engagement with the public.. A new system called a Neighbourhood Priority Statement is now being piloted. It is to be hoped that original detail can be incorporated into the new statements. No funding has been made available for the proposed NPS.

Call for sites As part of the Government directives Cornwall Council have put out a 'Call for sites' in order to provide a 2050 land supply. The initial returns were sifted through by a board of Developers and Planning Officers, for suitability. There was a link supplied to the public to make comment, which I shared at the time, but the system was not easy, but may still be followed through the Council website until the 1st January 2026. I commented on two sites in my division when I was the Local Member.. <https://cfs.cornwall.urbanintelligence.co.uk>

Climate Emergency

Cornwall declared a climate emergency in 2019, and the new plan is being developed to include policies that address this directly, helping to shape a more resilient future for the region. For example all new approved applications must provide housing to a carbon neutral standard and if this is not achieved a £25,000 levy is taken for each house built which is then used to retrofit the Councils existing housing stock.

Changed transport philosophy

The new plan is moving away from the "predict and provide" model, which led to more traffic and pollution. The new "decide and provide" model will focus on working with communities to plan for their specific needs and create healthier, more sustainable places. Notably there appear to be traffic monitoring going on in areas that are defined for development.

However robust the 'transport plans' appear on planning applications the reality is that people are generally very reluctant to use public transport (if it is available) bicycle and pedestrian means of movement. The noticeable increase in traffic on all our roads will certainly not improve and is set to be substantially increased.

CARBON BALANCED PRINT

**OFFSET CARBON.
PROTECT SPECIES.
ENHANCE YOUR
BRAND.**

**AS A CARBON BALANCED PRINTER,
WE OFFSET OUR ANNUAL EMISSIONS
WITH WORLD LAND TRUST.**

**ASK US ABOUT CARBON BALANCING
YOUR NEXT PRINT JOB TO HELP
PROTECT THREATENED HABITAT.**



**WORLD
LAND
TRUST™**

www.carbonbalancedprint.com
CBP2229

 **St Austell
Printing Company**

**www.sapc.co.uk
01726 624900**



TREMEER
CONSERVATORIES



Tremeer Conservatories have been creating bespoke conservatories and orangeries since 1991. We can construct them in either timber or UPVC and in any colour.

We can also supply windows, doors, glass balustrades and glass roofs as well as building standard or unique extensions.

To find out more information:
Call: **01208 851182 or 07798 644 293**
Email: **tremeerconstruction@gmail.com**



TWLandscapes



Tree surgery- hedge cutting -fencing-
Ride on mower - strimming- turfing
Twenty years experience
NPTC trained & fully insured

www.twlpm.com 07960652496

R. MEARS & Sons CHIMNEY SWEEP *Vac & Brush*

Cowl Fitting Service

CCTV investigation work carried out
01840 261 221 • 07737 533392

www.sweepcornwall.com

*Covering Cornwall & West
Devon*



HETAS®
Registered



N0711/30134

**ANDREW OATES
GARDEN MACHINERY
SERVICE
& REPAIRS**



New machinery on request
All leading brands
Prompt service.
Competitive rates
25 years experience
Collection & delivery
service available



**01208 821527
07791930935**

**Ground
Maintenance
Services**

**Hedging & Fencing
Stone Walling
Hedge Laying
Tree Pruning**

**Decking & Patios
Ground Clearance**

Contact:

Greg
07887 877103
07469 789255



**MARK FITCH
CHIMNEY
SWEEP**

- * BRUSH & VACUUM
- * CLEAN, RELIABLE SERVICE
- * COVERING ALL S.E. CORNWALL
- * DISCOUNT FOR MULTIPLE CHIMNEYS
- * COWLS & GUARDS FITTED
- * STOVES SERVICED



*Call
Mark on:*

**01579 350762
07773 462643**





APS
ARCHITECTURAL
DESIGN

A bespoke Architectural Design service
from inception to completion

For a free consultation
call 01208 821126

www.apsarchitecturaldesign.co.uk



www.bodminairfield.com
Want to Fly an Aeroplane?

Treat yourself to a trial lesson
Gift vouchers also available for the Perfect Gift!



Obtain your Private Pilot License
and other ratings.
Call us for more details

Cornwall Flying Club Ltd. 01208 821419



DARCROFT GARAGE & MOT CENTRE

FOUR WINDS ~ BODMIN ~ PL30 4HH

Class 4 & 7 MOTs



Cars & Camper Vans

Light Commercial

Horse Boxes & Trailers

All Repairs Undertaken

Servicing

Diagnostics

Welding

Local Breakdown Recovery

Friendly Efficient Local Service & Advice

Tel: 01208 821238

N. J. BLANCHARD

Plant Hire & Groundworks

M: 07791 072806

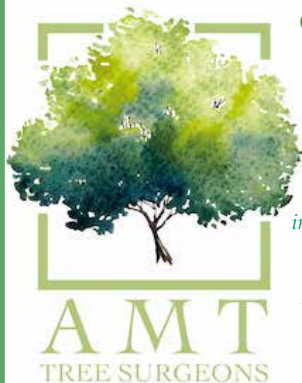
E: nick.blanchard@hotmail.co.uk

N J Blanchard specialising in:

- Drainage
- Pipe-laying
- Concreting
- Landscaping
- Site Clearance
- Scrub Clearance
- Septic Tanks
- Sand-schools & Yards

Full range of Plant machinery from mini-digger to heavy plant

For examples of our work please visit us on Facebook

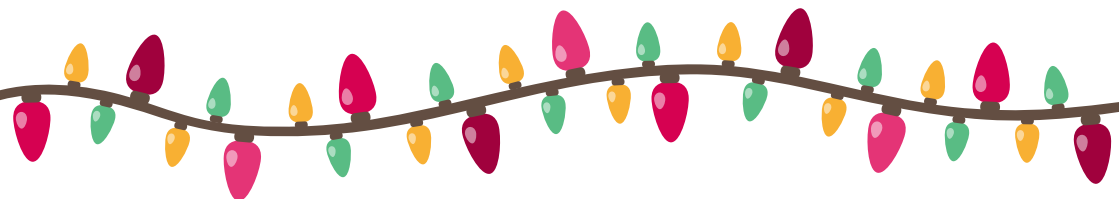


Contact: Alicia Morton-Thurtle
on 07554 890508, or email
amttreesurgeons@gmail.com

**South West based, female owned
Tree Surgery business.**

Covering all aspects of tree care
*including, pruning, felling, fruit tree pruning
in the winter, hedge trimming, logging and
waste removal from site.*

AMT Trees also offers emergency & call
out work in storms or accidents.
Located in Lanlivery.

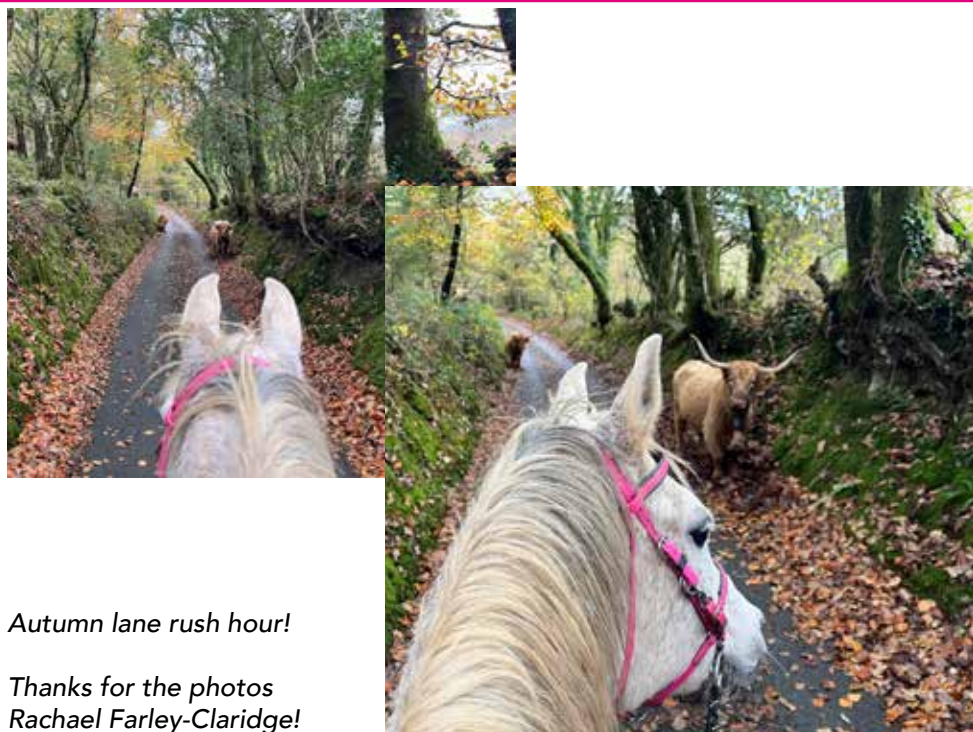


ELECTRICAL AND SOLAR MAINTENANCE

- ⚡ Electrical fault-finding
- ⚡ All non-notifiable electrical work
- ⚡ PAT testing
- ⚡ Solar power system health checks and repairs
- ⚡ Retrofit battery systems
- ⚡ Solar system design and advice



Call Ben
07887 561037



Autumn lane rush hour!

*Thanks for the photos
Rachael Farley-Claridge!*

AEROCLUB and **Cornwall Strut** at **BODMIN AIRFIELD**

CHOCKS AWAY for another Christmas Quiz at **BODMIN AIRFIELD**



On Wednesday 3rd December at 19.00 - (Dining starts at 17.30)
Join us for the Ultimate Aviation Christmas Quiz hosted by Jay Gates

QUIZ! 2025

Please book on 01208 821419 especially if dining at *AeroDine*. (Meals from 17.30)

Pete White, **AEROCLUB**, 01752 406660 or 07805 805679 or pete@aeronca.co.uk

Warleggan Young Farmers' Club – Recent Activities and Upcoming Events



Annual Firework Display

The annual firework display, organised by Warleggan Young Farmers' Club, was held in St Neot on Saturday, 1st November and proved to be an incredible evening for everyone involved. Club members once again excelled themselves by putting on an outstanding firework show and managing a highly successful barbeque. The event was extremely well attended, with many families from neighbouring villages joining in and showing their support. Sincere thanks go to everyone who came along and contributed to the evening's success. In total, over £1,500 was raised during the event. The Club would like to express their gratitude to all sponsors and members whose efforts made the evening so successful.

Annual General Meeting and Club Leadership

The Club recently held its Annual General Meeting, where new officers were welcomed into their roles. Harry Jones has taken on the position of Chairman, with Kenza Jay appointed as Secretary. The advisory committee has selected Kathryn Rowe to serve as Club President for the coming year. For this new Club year, the chosen charities are Penhaligon Friends and Little Harbour, reflecting the Club's ongoing commitment to supporting worthy causes.

Fundraising Achievements

During the AGM in October, members proudly announced a significant donation of £6,100 to Odd Balls, Yellow Wellies, and My Mind Matters. This impressive fundraising achievement was the result of the dedication and hard work of Club members, with invaluable support from the previous President, Sandra Morris. Congratulations are extended to everyone involved; all members should feel incredibly proud of what they have accomplished. The Club looks forward to holding more community fundraising events in the months ahead.

Upcoming Events and Club Activities

The coming months are set to be both busy and exciting for Warleggan Young Farmers' Club. Members will be taking part in several events, including the County Carol Service at Truro Cathedral on 19/12/2025. The Annual Dinner and Dance is scheduled to take place at Trevenna on 31/01/2026. Please watch out for further details regarding tickets or get in touch with a Club member if you would like to attend.

Monday evening Club nights will feature a variety of activities, such as "I'm a Young Farmer Get Me Out of Here," business meetings, an advisory surprise, and a visit to M & M Plan at Launceston. There is also the possibility of organising a Beetle Drive in January, which will help raise funds for this year's chosen charities Little Harbour, Penhaligon's Friends and the Warleggan YFC Club.

Please keep an eye on our social media pages for the latest news and details of forthcoming events. We are a group of like-minded individuals who enjoy having fun and learning together, while organising meetings and events for ourselves and the wider community. For more information, please feel free to contact Harry or Kenza at warlegganyfc@gmail.com.

We wish you all a Merry Christmas and a Happy New Year.

Cardinham Sports Club

www.cardinhamports.org Facebook - @cardinhamports

Christmas is coming

It may be getting wintery, but the Club is still going full strength - the court stays open, our tennis evenings continue every Wednesday from 6pm, as long as the weather is being kind - non-members might like to note that these social evenings are also open to anyone who wants to have a go, or hasn't played tennis for a long while.

We are looking forward to our mid-winter dinner at Trethorne Leisure Park followed by a couple of rounds of ten-pin bowling, Saturday 10 January, 7pm - all are welcome to join us, just call Lance Ardell on 07982 951969 for info and/or to book your place.

A vision for the future - and for you!

Our plans to renew the court (and, later, the clubhouse) are developing, as we seek to make our facilities better able to accommodate more than just tennis, and, in the process, make our court and clubhouse accessible to wheelchairs too. We aim to make our facility much more of a hub for the community.

We are looking for friends, members, local contacts and businesses who might like to join us in this endeavour, whether through donations, offers of skills or expertise in fundraising, sponsorships, purchases of advertising space, assistance in design and/or building work, etc. If we can demonstrate our dedication to this cause through fundraising, there are a number of bodies we can approach for finance, including Sport England's "Active Cornwall".

The whole programme is likely to cost close to £100,000 - no small amount! So if you'd like to join us, even in a small way, to help us achieve our goal, get in touch. Our chief contact is our chairman, Steve Clemens - he'd love to hear from you - 07796 016556, or email: chairman@cardinhamports.org.

Full details of our 'Vision for the Future' fundraising campaign, as well as information about our membership rates, our pay-and-play option for non-members, our Wednesday evening tennis sessions, and all our upcoming events are given on our website, cardinhamports.org, or you can call our secretary Chris on 01208 821409 or 07842 612989.

Cardinham Sports Club is registered with the Charities Commission as a charitable incorporated organisation, charity no. 1207259



Why were the oak trees producing so many acorns this autumn?

The answer comes down to a couple of words SPRING AND STRESS!.

Drought and heat caused the trees to drop their leaves early and produce a 'safety net' of fruit. However, the main reason for the record crop was the warm and dry spring, this assisted pollination and so the development of fruit (acorns).

Another point is that this year has been what's called a 'mast year'. This is a cycle that occurs every few years, particularly affecting oak and beech trees. A mast year means that there is plenty of fruit to, hopefully, produce new trees and allow plenty of fruit for predators...squirrels, badgers and birds. This is a perfectly natural event.

So everyone is happy. There is a slight downside in that next year the crop of fruit will be reduced and the clever trees will use their stored energy to help them through another year. Interestingly enough...but just in case, here's a way of reducing acorn production next year, I discovered ! What a crazy idea !

'You can significantly reduce but not completely stop acorn production by manually removing the female flowers in spring or applying chemical growth regulators during the blooming period, though timing is critical and effectiveness varies.'

So there ! Easy!!! Rather than getting the ladders out, please let Mother Nature take her course...oak trees **will recuperate next year by not producing so much fruit...just breathing a sigh of relief and reducing their STRESS levels.**

Not only acorns have been abundant but look at the apple crop this year and berries. Hawthorn, and holly trees have been loaded. Sometimes, after such enormous crops, we hear words like ' Look all the berries, it's going to be a cold winter'. This is incorrect...like the acorns, the reason for large crops, were the ideal Spring weather conditions.

So? Next question... 'Are we going to have a c-o-l-d shivery winter?

In fact the Met Office , hedging their bets, announce that England is expected to see a mixed winter, with the south and south-west experiencing milder, wetter conditions, while the north and east are exposed to harsher frosts and possible snowfall. We wait and see.

Richard Sutton



CARDYNHAM CHURCH

Recently I went on a training session about church buildings. At the end we were shown a book listing over a century of repairs and renewals for all Cornwall's churches. Of course I immediately turned to St Meubred's page and took a photo. We all know that for ordinary building work you need planning permission. What you may not know is that Church of England churches have a different system called 'Faculty'. So when we sold our eagle lectern we needed a faculty. My photo records every time St Meubred's church has had a faculty since 1873. In one sense it is a dry list, in another a fascinating window into all the changes that have taken place over the last 150 years at St Meubred's.

1873 was a pretty significant year for our church. It was when the church reopened after extensive restoration. In 1896 the then rector Athelstan Coode, removed and rebuilt 20 feet of tower. He also took down the existing five bells, re-cast them and added three more. It cost £400. In 1889 we got a new altar. In 1901 ten windows were restored and part of the north aisle wall was rebuilt costing £150. In 1907 there were more major works. The roofs of the north and south aisles were restored, the north wall buttressed, new heating installed and the east end of south aisle, formerly the Glynn Chapel became a lady chapel.

In 1919 the church remembered the war dead with the clock in the tower, and the carved oak altar rail in memory of Paul and Tom May, the rector's two sons, both killed aged 19, one in the army and one a pilot. In 1946, following bomb damage in the Second World War, a new inner arch was installed to the east window with new stained glass, a new *reredos*, a decorative backing to the altar, new carved oak stalls and the removal of the top step of three leading to the altar. Then in 1948, more stained glass to replace what was lost in the bombing and four new stained glass windows in the chancel. Also that year the tower was repointed. Then in 1951 the bells were re-tuned and re-hung.

Only in 1964 did we get electric light, along with a new Phillips tubular electric heating system. In 1967 the St Francis stained glass window in south aisle was given by Daisy in memory of her husband Reginald Runnalls of Hole Park, Mount. A year later in 1968 our ancient Norman font got a carved oak cover. The church was obviously still cold as in 1972 we installed electric radiant heaters and moved the existing tubular heaters to new positions. 1991 saw gutters and roof repairs, 1992 repairs to the vestry floor. Then the last big project, in 1996, when the nave roof was re-slatted and lead valleys replaced. The following year the Glynn Memorial was restored, 90 years after its previous restoration in 1907, and an aumbry and lamp in memory of Hazel Best was installed in the lady chapel.

150 years of keeping St Meubred's standing and making it beautiful. All that local effort and fundraising which made this possible. All encompassed in an official list of permissions. Tenders have now come in for our current work to the tower. We need to raise.£79,200, so are busy writing grant applications. We are also planning fundraising events over the next six months or so, we hope you'll support us.

Your Local Councillor - Chris Batters



Hello Everyone.

Most days, as I am out travelling around my ward, the weather reminds me that we are once again in the midst of winter with the cold, rain and of course the flooding caused by the annual overflow of poorly maintained local drains, gullies and soak aways. Do feel free to report any such flooding direct to the council, or give me a ring.

Locally I have been in communication with Highways with regard to a couple of issues within the parish.

One is the damaged gate at **Treslea Moor**. The gate and fencing was placed on the moor many years ago by Cornwall Council towards restricting the movement of the moorland ponies and cattle adding to their safety and especially keeping them from wandering onto the road system.

The Parish Council reported to me the deaths of some animals due to collision with vehicles. This is very sad of course and I have already written and spoken with Highways on this matter. They are clearly reluctant to accept the responsibility for repairing or replacing the gate. Although they erected the fencing and gates in the first place, and have maintained them for many years they have informed me that all records of the council putting the fences and gates there years ago have long since disappeared! That answer is unacceptable to me so I shall be pursuing the matter.

What I would ask is that drivers be more responsible and understand the dangers even 25 mph can be in rural areas, with narrow roads and tight blind bends. I know from my previous eight years as your councillor of the concerns for horse riders in the lanes and how many incidents have arisen because of speed! All drivers should be respectful of the rural area, the moorland animals and the horses and riders. Hopefully this might bring a bit of sense to those who seem to forget the possible dangers of even 20 - 25mph on rural roads. Please drive in a responsible manner.

At the last parish council meeting, we discussed how the new year will see the rollout by Cornwall Council of a 20mph speed restriction programme that will include rural areas. Each applicant can submit a request that falls under the description of the roll-out and from the list certain areas will be selected for consideration of having the 20mph limit.

With this being the last newsletter before Xmas, can I take this opportunity to wish you all a very Merry Xmas and a Happy New Year. I have thoroughly enjoyed the past seven months of my return as your Councillor and meeting so many of you.

If required, remember I am only a phone call or email away from helping you.

Telephone: 07503 121958 or 07714 323897

Email: cllr.chris.batters@cornwall.gov.uk

REGULAR EVENTS

| DATE | WHEN | EVENT | WHERE |
|------------------------|---------------|-------------------------------------|---------------|
| Monday | 7.30pm | Warleggan Young Farmers' Club | JHM |
| Monday | 7.15pm | Millpool Chorale Practice | CRM |
| Tuesday | 11.45-12.45pm | Pilates Mixed Ability Class | JHM |
| Tue (1st in month) | 2.30pm | Book Club (821208) | CRM |
| Tue (3rd in month) | 7.30pm | Parish Council Meeting | CPH |
| Tue (last in month) | 10.30am | Millpool Coffee Morning & Book Swap | CRM |
| Wed (2nd in month) | 2.30-4.30pm | Crafternoon | CRM |
| Wed (4th in month) | 7.30pm | Warleggan History Group | JHM |
| Thur | 7.00pm | Bell Ringing | St. Meubred's |
| Thur | 10-11 am | Pilates | CPH |
| Thur (1st in month) | 2.30-4pm | Tea Party & Chat | CPH |
| Thur (3rd in month) | 12.45pm | Helpline Lunch | CPH |
| Thur (last in month) | All day | Pensioners 10% Discount | Trago |
| Fri (term time only) | 9.15-11.15am | Little Fawns Toddler Group | CPH |
| Sat (1st in month) | 7.30-10.30pm | Pop Up Pub Night | CPH |
| Sat (last every month) | 9am-3pm | Farmers Market , Mount Folly | Bodmin |
| Sun (1st in month) | 10.45am-12 | KIDZ CLUB | CRM |
| Sun | 10.30am | Table Tennis (821409) | JHM |

CRM = THE COMMUNITY ROOM, MILLPOOL METHODIST CHURCH

CPH = CARDINHAM PARISH HALL, JHM = JUBILEE HALL MOUNT

We're introducing an online calendar which contains the main events that are happening in the Parish and surrounding area. It can be accessed by scanning the QR code or by following the web link. Hopefully you'll find it useful and can download those events you're interested in to your own calendar. If you have any comments or any dates you'd like to add please let Peter Claridge know by emailing cardinhameditor@gmail.com

<https://calendar.google.com/calendar/embed?src=a3b9771185adf781028de1b59127fa4b2ede66b4fa2a5e45b3d6497f809868ca%40group.calendar.google.com&ctz=Europe%2FLondon>



Please check village notice boards, emails and organisers for details.

If you have an event you would like us to publicise send details to cmcmag@outlook.com